

SPECIAL SERVICES
ORGANIZATIONAL CHART
2024-2025

- **FAPE**
- **Timelines**
- **IEP Process**
- **Procedural Guidelines**
- **Compliance Monitoring**
- **CALPADS**
- **SEIS Implementation**

- **Equity and Belonging**
- **Special Ed Programs**
- **Service Delivery**
- **Instruction**
- **Curriculum**
- **Inclusion**
- **ULS**
- **Professional Development**

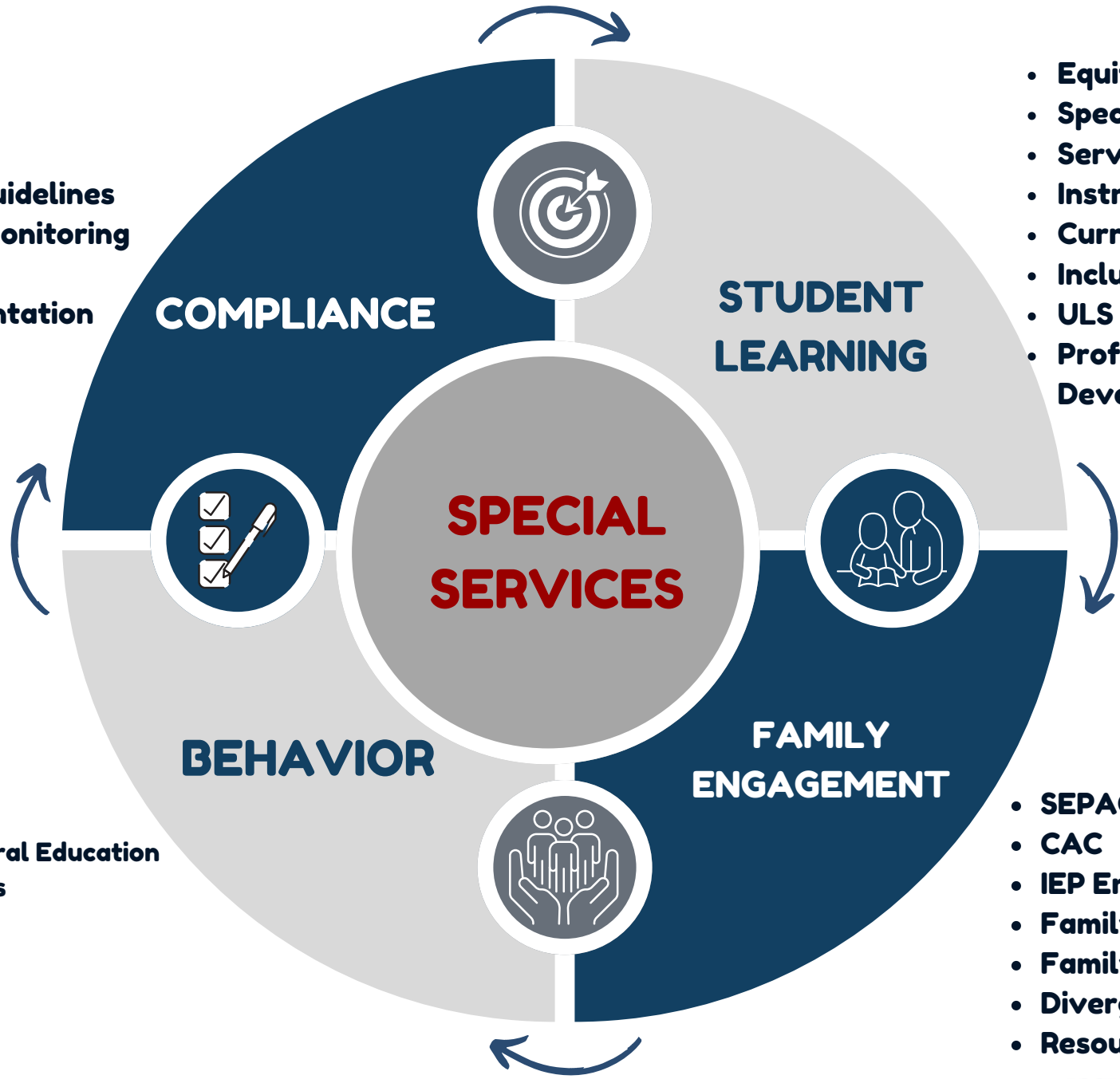
REACH

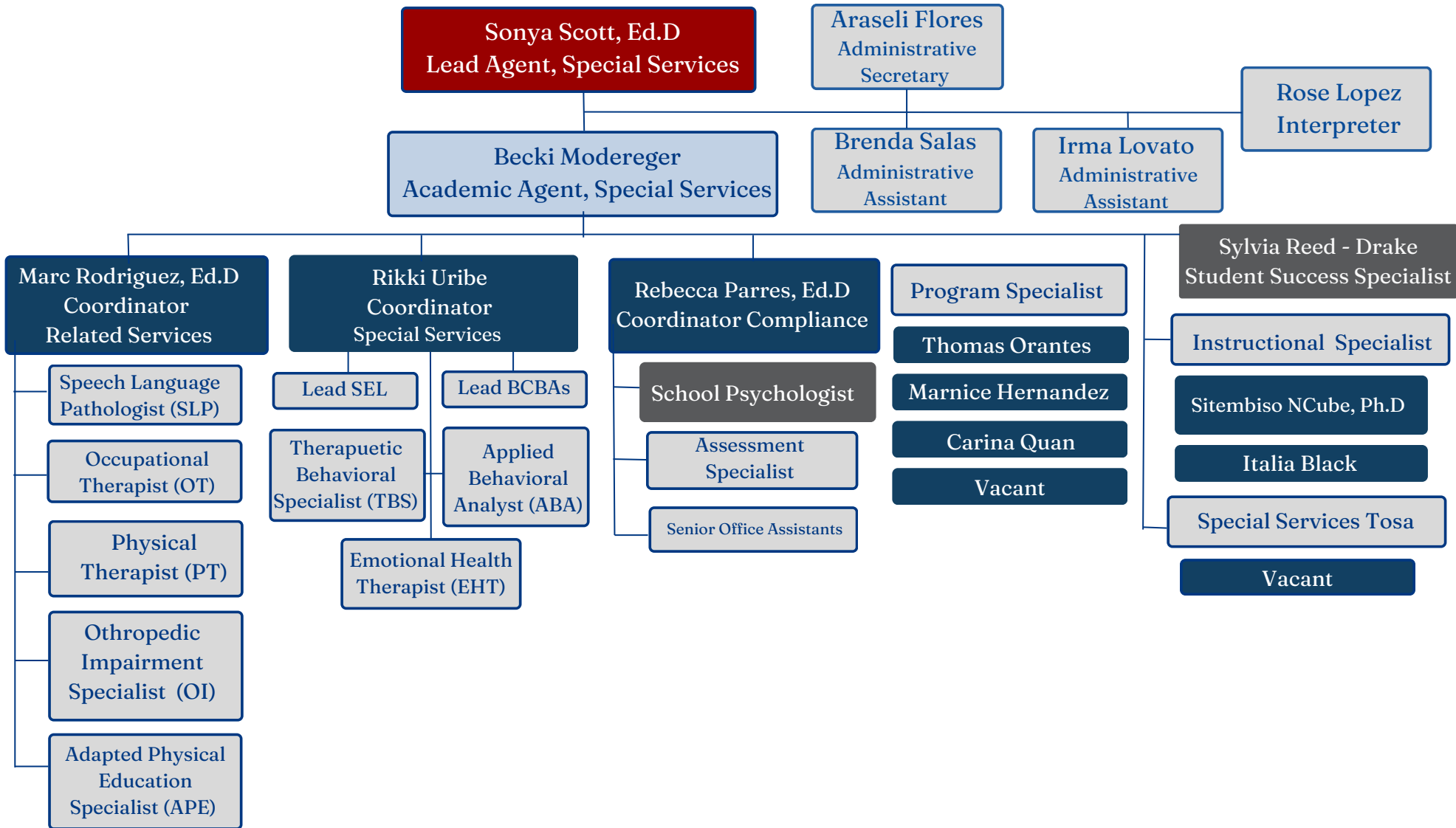
- **Respect**
- **Empathy**
- **Acceptance**
- **Community**
- **Healing**

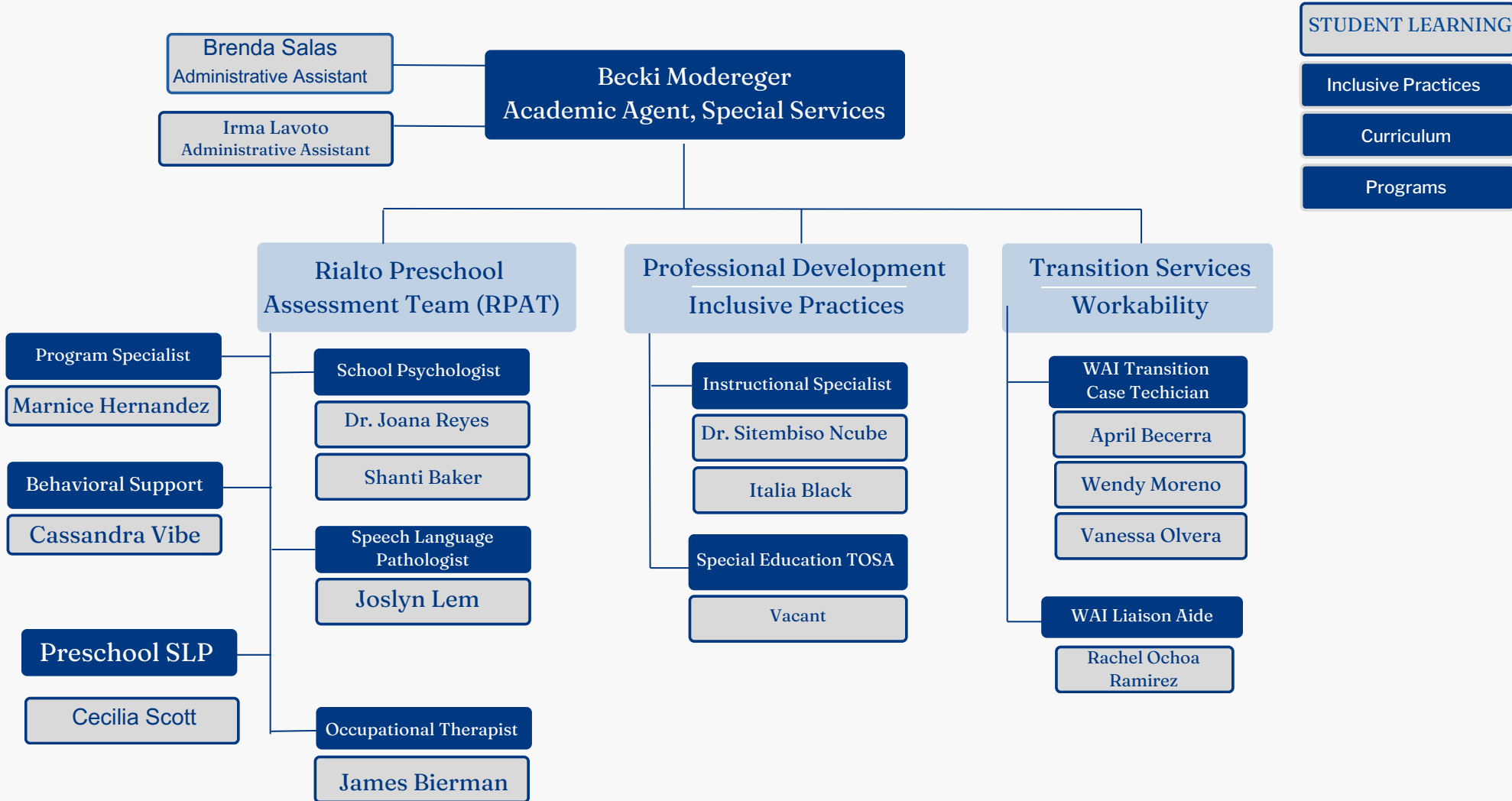
Supports for General Education and Special Services

- **Behavior**
- **SEL**
- **Mentoring**
- **Safety**
- **Mental Health**
- **Trauma Informed Practices**

- **SEPAC**
- **CAC**
- **IEP Empowerment**
- **Family Training**
- **Family Events**
- **Divergent Games**
- **Resource Expo**







- STUDENT LEARNING
- Inclusive Practices
- Curriculum
- Programs

Program Specialist

Programs

School Sites

Marnice Hernandez Early Childhood Special Education (ECSE) Programs	TK - K SEED Preschool	Kordyak ES (ECSE) Bemis ES (ECSE) Casey ES (ECSE)	Werner ES (ECSE) Boyd ES Dollahan ES	Hughbanks ES Fitzgerald ES Simpson ES
Thomas Orantes Elementary Programs	K- 5 Mild/Mod SAI(RSP)/SDC	Curtis ES Henry ES Morgan ES	Myers ES Bemis ES Kordyak ES	Dunn ES Preston ES Werner ES
Vacant Secondary Programs	6- 12th Mild/Mod SAI (RSP)/SDC	Jehue MS Kolb MS Rialto MS	Frisbie MS Kucera MS	Carter HS Rialto HS
Carina Quan Moderate/Severe Programs	K - 12 ATP Mod/Sev SDC	Casey ES Werner ES Kordyak ES	Jehue MS Frisbie MS Rialto MS	Kucera MS Milor HS Carter HS Rialto HS Eisenhower HS

Programming
IEP Support

Instructional Specialist

School Sites - Inclusive Programs

Sitembiso Ncube, Ed.D Inclusion Programs	K- 5 (Inclusion) Elementary Sites ECSE Programs	(PK Inclusion) Preston ES Kordyak ES	Morris ES Kelley ES Trapp ES Garcia ES
Italia Black Inclusion Programs	6th - 12th (Inclusion) Secondary	Jehue MS Kolb MS	Eisenhower HS

Programming
Instruction



Supporting Inclusive Practices Grantee

STUDENT LEARNING

Inclusive Practices

Related Services

Programs

Dr. Marc Rodriguez
Coordinator, Related Services

Communication Development

Speech Language Pathologists (SLP)

Jaime Alexander	Paulina Escobedo	Jennifer Myers
Brenda Aguiano	Allison Farr	Kristi Payne
Jamie Billings	Yasmin Fuller	Margot Perez
Brittney Brown	Summer Harp	Ian Reed
Rey Bustillo	Maritza Mendoza	Caleigh Richard
Jerry Butanda	Sarah Lloyd	Jazmin Vargas
Raquel Castro	Chareca Lyons	Jennifer Truett
Robert Cook	Roxanna Maldonado	Sarah Vaca
Rehannon Cote	Melanie Martinez	Maria Fernanda Ochoa
Jennifer Davidson	Erin Meers	
		Vacant

Motor Development

Physical Therapist (PT)

Dr. April McElfish

Orthopedic Impairment Specialist (OI)

Monica Muglia

Adapted Physical Education Specialist

Bryan Douglas

Bill Evans

Tony Kounas

Jeff Martinez

Harold Turner

Occupational Therapist (OI)

James Bierman

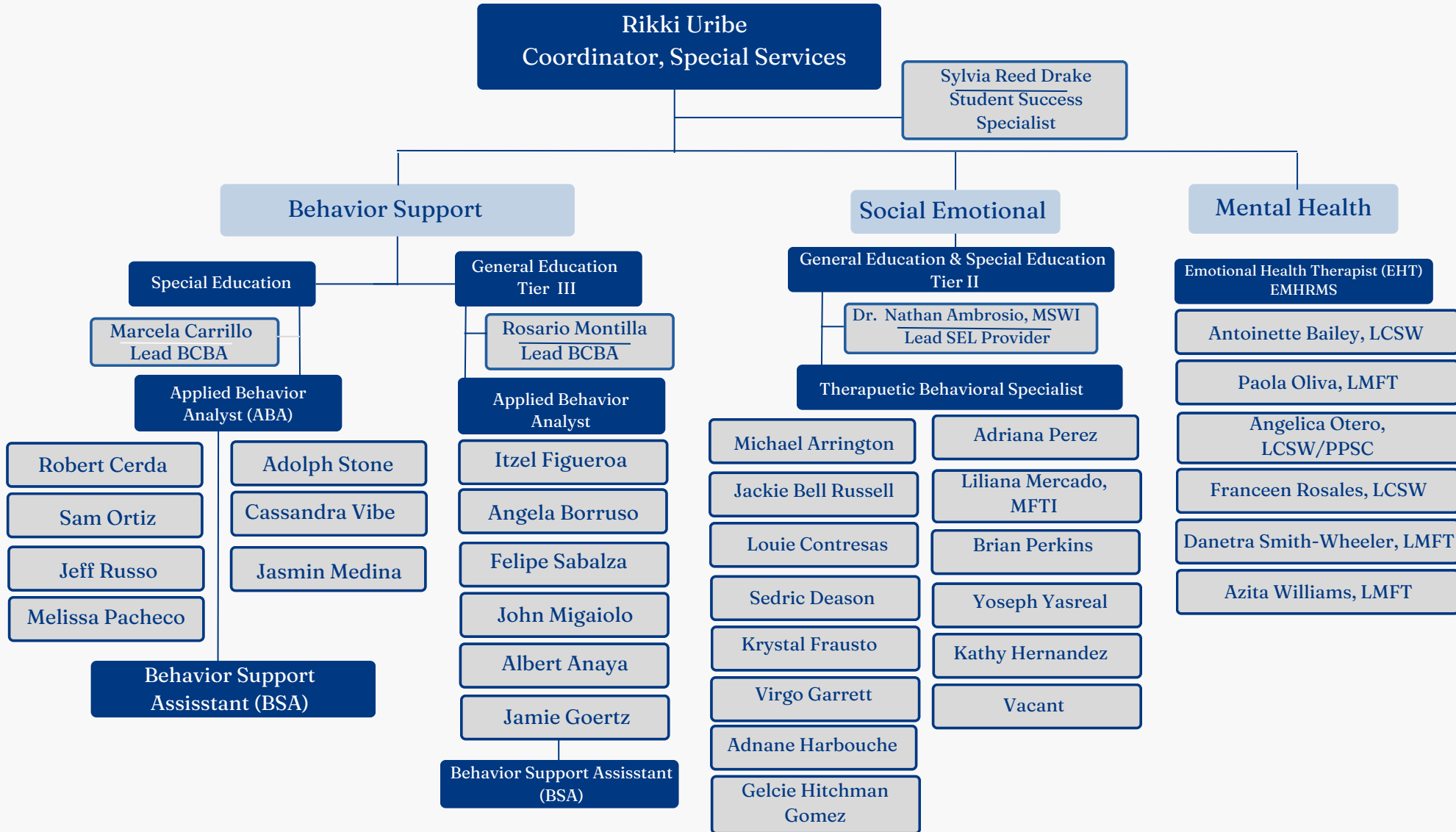
Bernardette Mendoza

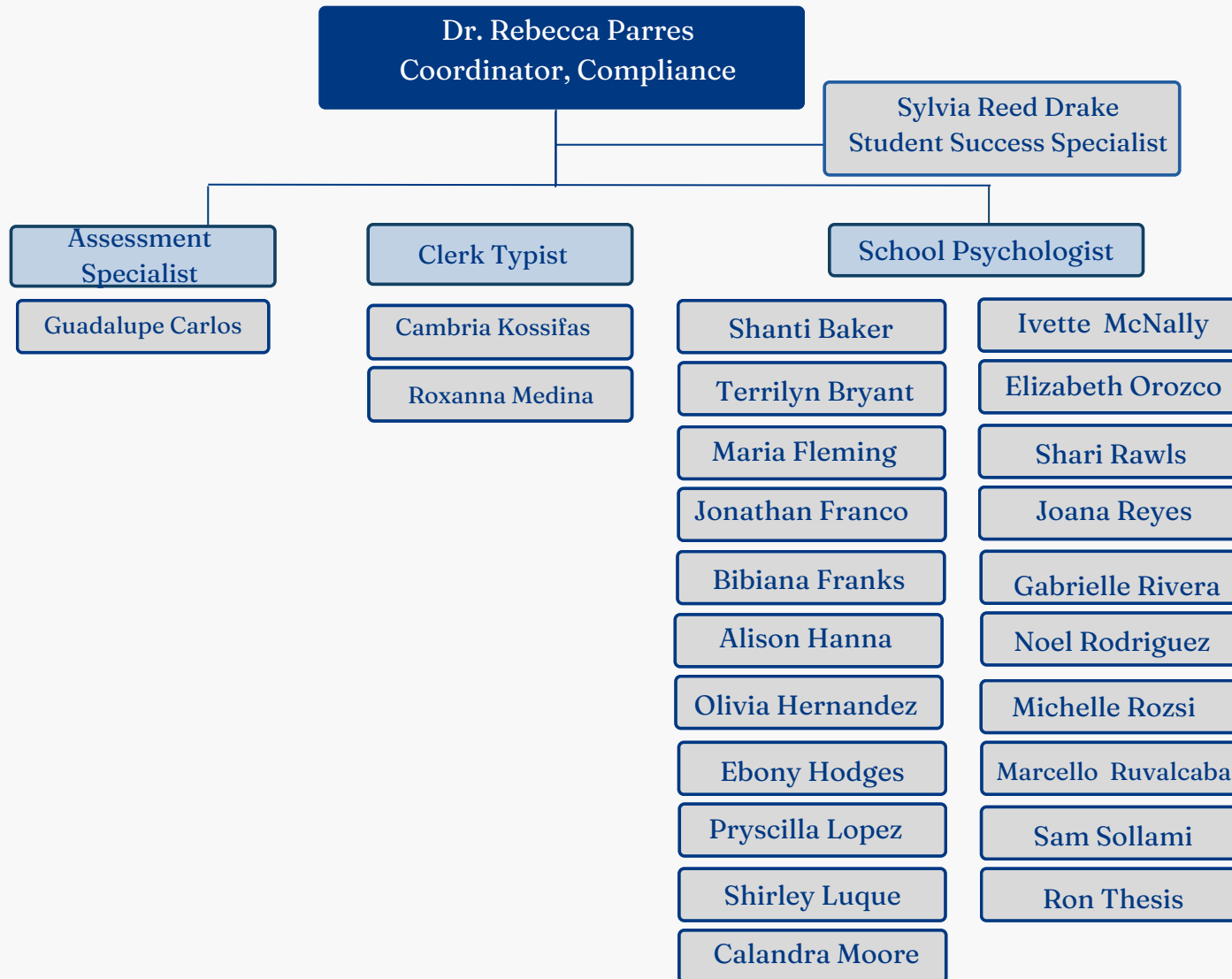
Mary Nguyen

Uverenise Rosas Leon

Jourdan Santibanez

Emily Hereen





- COMPLIANCE
- Home/Hospital
- County
- Non Public Schools
- Service Logs
- Records Request

Dr. Sonya Scott

Lead Agent, Special Services

Direct Supervision of

Academic Agent, Special Services

Coordinators

Program Specialist

Student Success Specialist

Emotional Health Therapists

(EHT)

Therapeutic Behavior Specialist

(TBS)

Lead BCBA's

Lead SEL Provider

Administrative Secretary

Special Services Interpreter

Senior Office Assistants

Indirect Supervision/Support of
All Special Education Staff

Grants

- CYBHI Grant
- SBHIP Grant
- SIP Grant

Events

- Divergent Games

Special Services

MANAGEMENT OF ALL SPECIAL EDUCATION SERVICES AND SUPPORTS

- Provide leadership for guidance and development of all special education personnel on legal mandates, effective IEP preparation and presentation and effective instructional programs.
- Oversight of all Pk- 12th programs (including Rialto Preschool Assessment Team (RPAT), Early Childhood Special Education (ECSE), Elementary and Secondary Programs, Adult Transition Programs (ATP), Workability and Post-secondary transitions).
- Oversight of Home and Hospital Instruction
- Act as liaison with the Office for Civil Rights and California Department of Education to collect all data necessary in compliant investigations for Special Education students.
- Maintain special education records on students and the distribution of records by other districts and outside agencies
- Establish and maintain cooperative and professional working relationships with all parents and staff.
- Motivate, challenge and guide others in the improvement of educational programs and services

COMPLIANCE OVERSIGHT

- Compliance Improvement Monitoring (CIM)
- Policies and Procedural Manual development
- EVSELPA, Special Ed Programs and Contracted Services
- Alternative Dispute Resolution and Due Process Filings
- Extended School Year (ESY)
- County Programs/ Non-Public Schools and Alternative Placements
- Monitor compliance IEP data and insure that all IEPs are compliant by year end

PROFESSIONAL DEVELOPMENT

- Services Education Hot Topics
- Compliance and Alternative Dispute Resolutions (ADR)
- Facilitated IEPs
- Inclusive Practices and Universal Design for Learning

OTHER AREAS

- Special Education Parent Advisory Committee (SEPAC)
- EVSELPA Steering Meetings
- Parent IEP Empowerment Training
- EVSELPA Supporting Inclusive Practices Leadership

ADDITIONAL SUPPORTS

- Model effective instructional practices
- Observe teachers and provide feedback
- Facilitate IEP Meetings
- Hiring of Special Education Staff



Becki Modereger

Academic Agent,
Special Services

Supervision of

Instructional Specialist
Special Services TOSA
Administrative Assistant
RPAT Administrative Asst
RPAT Staff
Workability Techicans
Middle School Workability
Liasion Aide

INCLUSION, EQUITY AND SOCIAL JUSTICE

- Development, implementation and monitoring of District Inclusion Plan.
- Coordinate and facilitate all Special Education training and Professional Development.
- Assists in establishing improvement benchmarks for students with exceptional needs.
- Researches, plans, implements, and evaluates District-wide equity initiatives related to equity and student academic achievement, behavior supports, specialized academic instruction and related services.
- Plans, implements, and evaluates District-wide initiatives to close the achievement and access gaps in the academic core for students with exceptional needs.
- Actively researches best practices and local, state, and federal government policies related to achievement gap.
- Develops a comprehensive communication plan regarding progress monitoring for students with exceptional need.
- Facilitates creative and complex conversations and growing the District's organizational capacity to do action-based work in eliminating educational inequities and disparities for historically underrepresented students.
- Supports adult learning that transforms cultures, behaviors, and practices to empower all students to learn, achieve and succeed in a global society; creates and promotes a more inclusive culture in which differences are valued and celebrated.
- Creates and promotes a more inclusive and welcoming culture.

PROFESSIONAL DEVELOPMENT

- Inclusive Practices, Universal Design for Learning, Co-teaching Models
- Social Justice and Equity
- Expanding access and opportunities for all students
- Special Services Hot Topics

OTHER AREAS

- Models instructional practice
- Observe teachers and provide feedback
- Parent IEP Empowerment training

Dr. Marc Rodriguez

Coordinator, Related Services

Supervision of

Speech Language

Pathologist (SLP)

Occupational Therapist (OT)

Physical Therapist (PT)

Orthopedic Impairment

Specialist (OI)

Adapted Physical Education

Specialist (APE)

RELATED SERVICES OVERSIGHT

- Acts as a resource to Speech Therapist, Special Education teachers, Orthopedic Impairment and Adapted Physical Education Specialist, Occupational Therapists and Physical Therapist.
- Collaborates with Special Education staff and administrators related to Special Education supports and services, as needed.
- Recommends procedures, placement options and instructional strategies to ensure students needs are met.
- Responsible for developing, implementing, and evaluating related services and supports.
- Maintain contact with current research practices and legislative guidelines affecting Special Education for related services.
- Ensuring that student progress is evaluated on a regular basis and that findings are used in making decisions to improve effectiveness.
- Providing oversight to the maintenance of records of student progress, filing reports, IEP's and caseload documents.
- Assisting in the hiring process of related service providers.
- Serving in the role as LEA at IEP meetings as designated by the Lead Special Services Agent.
- Assists the Lead Special Services Agent in developing and implementing all aspects of special education programs in accordance with local, state and federal regulations.

PROFESSIONAL DEVELOPMENT

- All Related Services
- Special Services Hot Topics
- SEIS Navigation
- Parent IEP Empowerment training

OTHER AREAS

- Related Services Case Management Monitoring
- IEP Meeting Facilitation

Dr. Rebecca Parres

Coordinator, Compliance

Supervision of
School Psychologist
Assessment Specialist

OVERSIGHT OF SPECIAL EDUCATION COMPLIANCE

- Establishes compliance initiatives and audit process to support compliance and legal mandates.
- Creates monthly IEP compliance status reports to be distributed to school site.
- Prepares schools for participation in the data analysis and all compliance reviews.
- Provides consultation and technical assistance to administrators and staff in the area of special education compliance.
- Communicate new developments in special education law to staff.
- Develops procedures and coordinates all required responses to a variety of requests and complaints regarding special education compliance.
- Provides oversight and supervision of the implementation of the IEP Management system and develop in-service trainings and programs for teachers, instructional assistants and other district personnel.
- Oversees responses to requests in accordance with the California Public Records Act.
- Keeps current with trends or developments in, and evaluates and recommends adoption of new procedures, policies and regulations in regards to special education
- Oversight of CALPADS and data compliance

PROFESSIONAL DEVELOPMENT

- All Related Services
- Special Services Hot Topics
- SEIS Navigation

ADDITIONAL SUPPORTS

- County and Non-Public School Placements
- Home and Hospital Instruction
- Records Requests
- Service Logs

OTHER AREAS

- Parent IEP Empowerment training
- Observe teachers and provide feedback
- Facilitate IEP Meetings
- Hiring of Special Education Staff

Rikki Uribe

Coordinator, Related Services

Supervision of

Board Certified Behavior

Analyst (BCBA)

Applied Behavior Analysts

(ABA)

Behavior Support Aides

(BSA)

BEHAVIORAL SUPPORTS

- Assist in the development, implementation and assessment of student behavior support and intervention programs and services at all Elementary and Secondary sites.
- Provide consultation and collaborative support to the Student Success Specialist, PBIS TOSA, Internal/External Coaches, PBIS school site teams, Therapeutic Behavior Strategists, Wellness Centers, and Site Administrators in the identification, planning, implementation, and Social Emotional Learning (SEL) Tier III services for student behavior support.
- Enhance the personal and professional growth of support staff by implementing ongoing student focused behavior support trainings.
- Assist with formal and informal student assessments and participate in the development of new behavior support programs for students.
- Assists in evaluating the effectiveness of behavior supports and programs
- Monitors student behavioral needs and progress on a regular basis
- Implements evidence based instructional practices to assist students with maladaptive behaviors
- Trains staff regarding behavior analytic concepts, including data collection
- Provides parent and staff in-services on relevant behavioral and instructional strategies.
- Collaborates with instructional staff, outside agencies, and consultants to provide supervision of school based and extended day programming.
- Assessment, implementation, monitoring and fading of Intensive Individualized Supports
- Monitoring of suspension data related to students with disabilities.

PROFESSIONAL DEVELOPMENT

- Models instructional practice and behavior strategies
- PCM Training
- Deescalation Strategies

ADDITIONAL SUPPORTS

- County and Non-Public School Placements
- Agency Staffing

OTHER AREAS

- Observe teachers and provide feedback
- Conducts Functional Behavior Assessments
- Assist with Special Education hiring

Marnice Hernandez
Early Childhood Special
Education (ECSE) Programs
TK - K
SEED
Preschool

Thomas Orantes
Elementary Programs
K- 5
Mild/Mod
SAI(RSP)/SDC

Vacant
Secondary Programs
6- 12th
Mild/Mod
SAI (RSP)/SDC

Carina Quan
Moderate/Severe Programs
K - 12
ATP
Mod/Sev SDC

PROGRAM DEVELOPMENT

- Observes, consults with, and assists special education teachers and assist principals in designing programs to meet the instructional needs of students who receive special education and related services.
- Ensuring that student progress is evaluated on a regular basis and that findings are used in making decisions to improve program effectiveness.
- Plans programs, coordinates curricular resources, and assists in evaluating the effectiveness of programs for individuals with exceptional needs.
- Provides coordination, consultation and program development in his/her area(s) of expertise
- Provides assistance to the special education teaching staff in planning, organizing and coordinating staff functions, necessary staff development, and use of facilities, materials, and equipment purchase.
- Assists in planning, implementation, and innovation of special methods and approaches of staff development activities at school
- Participates as a member of IEP team as appropriate.
- Assists special education personnel in implementing and coordinating the services in the IEP.
- Responsible for monitoring curriculum, materials, and methodology in his/her area(s) of expertise.
- Implements evidence based instructional practices to assists students.
- Provides appropriate achievement and/or diagnostic testing, identifies student capabilities and monitors student progress on a regular basis.
- Serves as a resource in the identification, and use of instructional materials in order to differentiate instruction.
- Assists in the matriculation of special education personnel in implementing and coordinating the services in the IEP.
- Maintains knowledge of current laws and regulations pertaining to FAPE and IEP compliance.
- IEP Facilitation

PROFESSIONAL DEVELOPMENT

- Inclusive Practices - UDL, Co-teaching and expanding access
- Special Services Hot Topics
- SEIS Navigation
- Parent IEP Empowerment training

OTHER AREAS

- Models instructional practice
- Observe teachers and provide feedback
- Conducts academic assessments

Sitembiso Ncube, Ed.D
Inclusion Programs
K- 5 (Inclusion)
Elementary Sites
ECSE Programs

Italia Black
Inclusion Programs
6th - 12th
(Inclusion)
Secondary

Instructional Support

- Collaborates with all teachers with interpreting the abilities and disabilities of students, assists in developing classroom intervention strategies and modifying general education curricular, as necessary.
- Collaborates with staff to create differentiated learning experiences based on the District's Literacy, Numeracy and Future Ready Framework.
- Implements evidence based instructional practices to assists students.
- Develops procedures, guidelines, timelines, and acquires materials for all schools' differentiation services to support students with exceptional needs in inclusive environments.
- Facilitates the effective management, use, and analysis of data to improve academic outcomes for students with disabilities.
- Works in collaboration with all staff to problem solve and to identify innovative, practical, and effective differentiation strategies based on student strengths to meet student-learning needs.
- Assists staff in identifying the gap between performance and expectations, linking strategy to assessment, and designing high-quality interventions.
- Provide curriculum support and training for all teachers and continuous staff development that supports inclusive school environments.
- Provide input regarding appropriate intervention/remediation strategies.
- Assist teachers in the development and implementation of effective classroom management strategies, individual behavioral intervention, instructional planning, and classroom organization, as needed.
- IEP Facilitation

PROFESSIONAL DEVELOPMENT

- Inclusive Practices - UDL, Co-teaching and expanding access
- Special Services Hot Topics
- SEIS Navigation
- Parent IEP Empowerment training

OTHER AREAS

- Models instructional practice
- Observe teachers and provide feedback
- Conducts academic assessments

Sylvia Reed Drake
Student Success Specialist

PREVENTION AND INTERVENTION SERVICES

- Develops and conducts evidence-based professional development trainings specific to school sites and district to address barriers to learning and restore and maintain a safe and healthy learning environment for students, staff, and parents, including Impact of Trauma and Learning, Psychological First Aid, Crisis Intervention, Threat Assessment and Management, and Suicide Prevention Services.
- Collaborates with teachers and school staff consultation to develop strategies for classroom management, designing and monitoring behavior contracts, and positive behavior support planning and implementation.
- Collaborates with the school-sites and district staff to identify students in need of additional Tier support using screening tools, student data, and referral processes.
- Supports the supervision and implementation of evidenced-based practices including screening, assessment, program implementation, and outcome measures at clinics, school sites, and specially funded programs.
- Develops, completes, monitors, and implements documentation and program accountability and improvement by utilizing electronic health records and other District data systems.
- Provides assistance and support for student and their families or critical incidents relating to crisis counseling & intervention services, threat assessment and management, workplace violence prevention, and suicide prevention.
- Plans, coordinates, and participates in multidisciplinary teams, including Positive Behavior Intervention & Supports Team (PBIS), Student Success Teams (SST), School Attendance Review Team (SART), Crisis Response Team (CRT), Threat Assessment Teams (TAT), and Child Welfare and Attendance (CWA).
- Coordinates and collaborates with program and District stakeholders such as students, parents, community-based agencies, and partners.
- Collaborates with community partners, school staff, and outside agencies that can provide schoolbased services and interventions for students and their families.

PROFESSIONAL DEVELOPMENT

- Fentanyl Presentations
- Crisis Response Team Training

OTHER AREAS

- Health Services Support
- Parent Training
- Child and Youth Behavior Health Initiative (CYBHI)
- Student Behavioral Health Initiative Program (SBHIP)
- Statewide Multiplier Fee Schedule