

RIALTO UNIFIED SCHOOL DISTRICT

# ORGANIZATIONAL CHART

2023-2024



## MEMBERS OF THE BOARD OF EDUCATION

**Joseph W. Martinez**  
President

**Edgar Montes**  
Vice President

**Evelyn P. Dominguez**  
Clerk

**Dr. Stephanie E. Lewis**  
Member

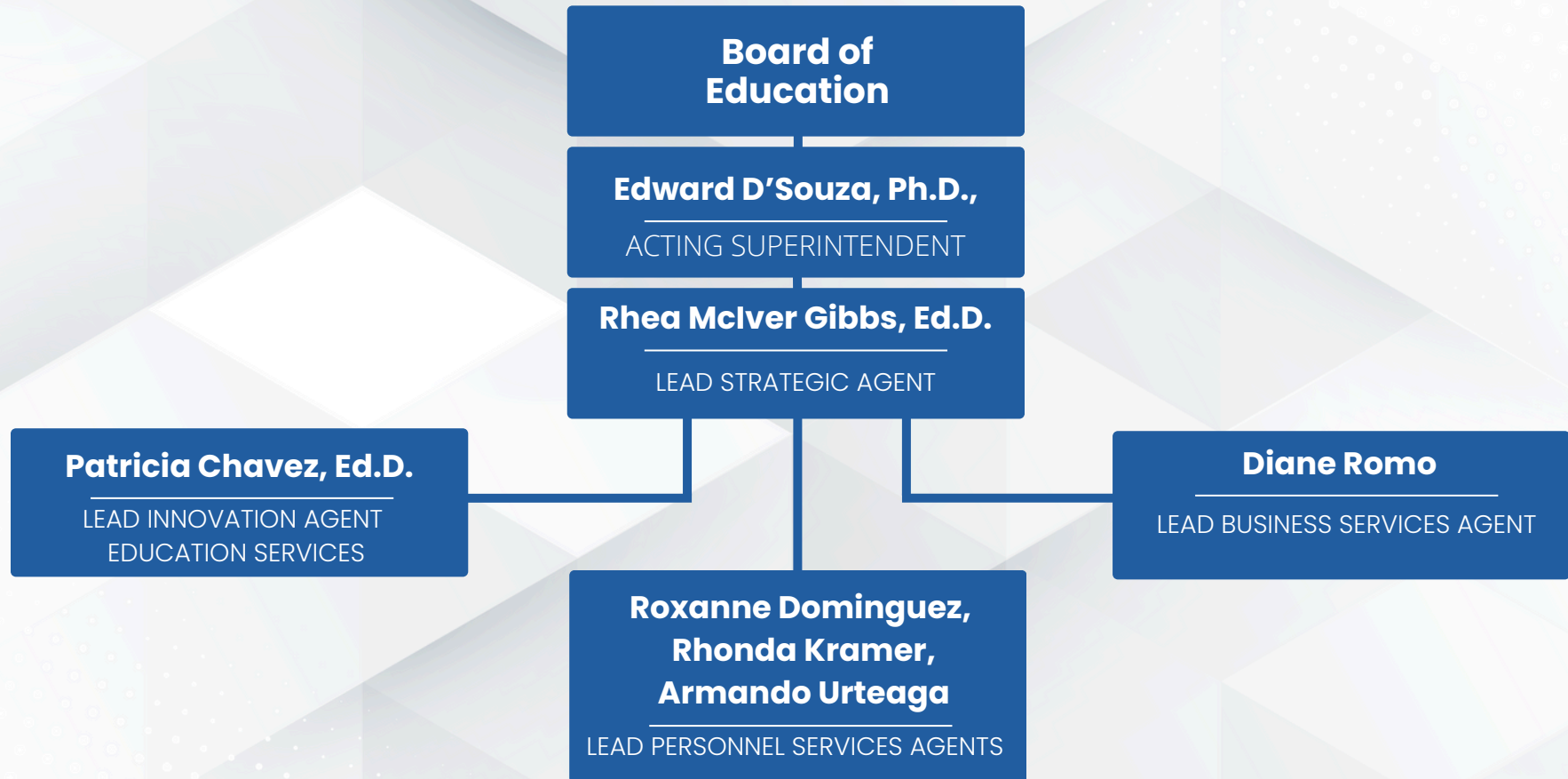
**Nancy G. O'Kelley**  
Member

**Keiyne Galazo**  
Student Member

**Edward D'Souza, Ph.D.**  
Acting Superintendent



# ORGANIZATIONAL CHART



# ADMINISTRATIVE SERVICES





# ADMINISTRATIVE SERVICES

**Martha Degortari**

EXECUTIVE  
ADMINISTRATIVE AGENT

**Tina Brown**

ADMINISTRATIVE AGENT

**Edward D'Souza, Ph.D.,**

ACTING SUPERINTENDENT

**Rhea McIver Gibbs, Ed.D.**

LEAD STRATEGIC AGENT

**Michelle Buckley**

ADMINISTRATIVE  
SUPPORT AGENT

**Syeda Jafri**

AGENT: COMMUNICATION/MEDIA  
SERVICES

**Joseph Williams**

COMMUNITY AGENT: STRATEGIC  
PARTNERSHIPS



# EDUCATION SERVICES





# EDUCATION SERVICES

**Patricia Chavez, Ed.D.**

LEAD INNOVATION AGENT

**Yolonda Cervantes**

ADMINISTRATIVE  
SUPPORT AGENT

## ELEMENTARY AND SECONDARY INNOVATION

**Manuel Burciaga, Ed.D.**

Lead Academic Agent:  
Secondary Innovation

**Ingrid Lin, Ed.D.**

Lead Academic Agent:  
Elementary Innovation

## STEM AND COLLEGE

**Juanita Chan-Roden**

Academic Agent:  
Science and Career Programs

## EXPANDED LEARNING PROGRAMS

**Norberto Perez**

Agent: Expanded Learning  
Program

## ASSESSMENT, RESEARCH, DATA ANALYSIS AND EDUCATIONAL TECHNOLOGY

**Paulina Villalobos**

Agent: Academic Technology

## SPECIAL SERVICES

**Sonya Scott, Ed.D.**

Acting Lead Special Services  
Agent

**Patricia Sosa-Alaniz**

Academic Agent: Alternative  
Dispute Resolution

## SAFETY SUPPORT SERVICES

**Gordon Leary**

Lead Agent: Safety & Intervention  
Services

## SPECIAL PROGRAMS

**Kevin Hodgson, Ed.D.**

Academic Agent: Special  
Programs

## STUDENT SERVICES

Lead Student Services Agent

**Francisco Camacho, Ed.D.**

Agent: Child Welfare &  
Attendance

## EARLY EDUCATION

**Alexis Bogarin**

Administrator

## MULTILINGUAL PROGRAMS

**Marina Madrid, Ed.D.**

Agent: Multilingual Programs

## EQUITY, EXCELLENCE & ACCESS

**Ayanna Ibrahim-Balogun, Ed.D.**

Principal on Special Assignment

# BUSINESS SERVICES





# BUSINESS SERVICES

**Jennifer Carroll**

ADMINISTRATIVE  
SUPPORT AGENT

**Diane Romo**

LEAD BUSINESS SERVICES AGENT

**Nicole Albiso**

LEAD FISCAL  
SERVICES AGENT

**Matt Carter**

AGENT:  
MAINTENANCE & OPERATIONS

**Ricardo Salazar**

AGENT:  
PURCHASING SERVICES

**Beth Ann Scatlebury**

TECHNOLOGY SERVICES

**Derek Harris**

LEAD AGENT RISK MGMT. &  
TRANSPORTATION SERVICES

**Fausat Rahman-Davies**

LEAD AGENT:  
NUTRITION SERVICES

**Angie Lopez**

AGENT:  
FACILITIES PLANNING

**Rose Lopez**

CONTRACT ANALYST



# PERSONNEL SERVICES







# PERSONNEL SERVICES

**Roxanne Dominguez,  
Rhonda Kramer,  
Armando Urteaga**

LEAD PERSONNEL SERVICES AGENTS

**Nancy Mann,  
Mayra Saucedo**

ADMINISTRATIVE  
SUPPORT AGENTS

**Ricardo Carranza**

PERSONNEL SPECIALIST